

BioMini Installation Guide

(Version 1.2)



Revision History

Rev No.	Issued date	Description
1.0	Dec 5, 2008	Initial Release
1.1	Aug 24, 2009	Driver Update
1.2	Jan 19, 2010	Win7 Driver Update

Contents

1. Overview	4
2. Features	5
3. Applications	5
4. Driver Installation.....	6
4.1. Install Driver Program	6
4.2. Confirmation of Driver installation	7
5. Specification and System requirements	9
5.1. Specification.....	9
5.2. System requirements	9
6. FCC Notices	10

1. Overview

The BioMini is a high performance USB fingerprint scanner

The BioMini has been designed specially to provide high level biometric security for desktops as well as complex network environments. Our latest range of high-performance fingerprint USB scanners are supported by powerful software development kit (SDK) which features Suprema award-winning fingerprint algorithm. Ranked top in FVC 2004, 2006 and NIST MINEX tests. Suprema PC solution provides unrivalled versatile platform for development to leading security companies, system integrators and hardware manufacturers.

BioMini SDK is suitable for applications where fingerprint enrollment and recognition can be done on PC or network based systems with Suprema USB fingerprint scanner such as BioMini or SFU-300. Suprema supplies different types of USB fingerprint scanners that can work together with BioMini SDK.



2. Features

- Fingerprint image resolution 500DPI
- Hard and Strong Optical sensor
- High-speed USB 2.0 interface scanning
- Support Simply Installation
- Windows 98, 98SE, Me, 2000, XP(32/64Bit), Vista(32/64Bit)
Windows7(32/64Bit) support

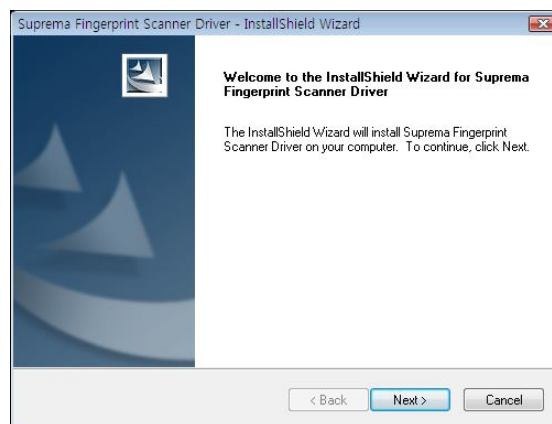
3. Applications

- Kiosk, POS terminal
- Time attendance terminal

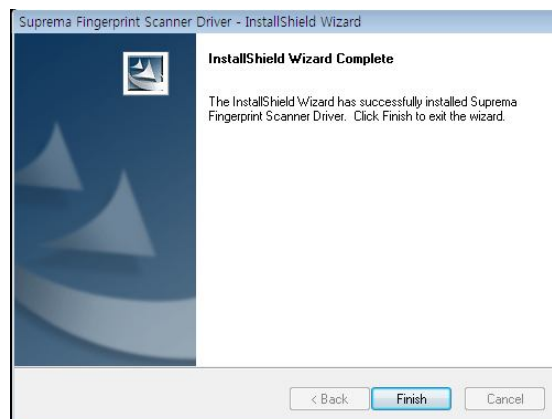
4. Driver Installation

4.1. Install Driver program

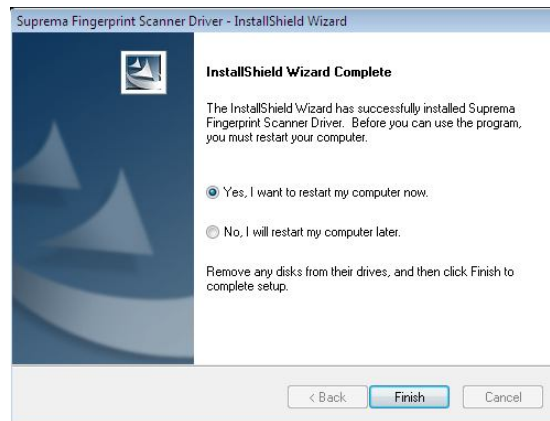
1. Please remove the BioMini from PC before running install driver program.
2. Windows 98, 98SE, ME
 - Sup_Fingerprint_Driver-Win9x.exe
3. Windows 2000, XP(32/64Bit), Vista(32/64Bit), 7(32/64Bit)
 - Sup_Fingerprint_Driver-W2K.exe
4. Run install driver program.



5. Click the "Next" button if you want to install, if not click "Cancel" button.



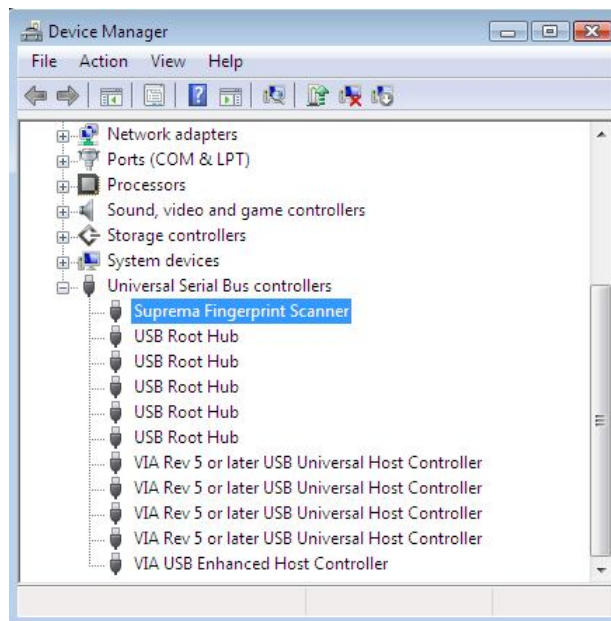
6. Click the "Finish" button after finishing installation.



7. If the PC has installed driver, the System needs rebooting.
Click the "Finish" button and rebooting, then installation is done.

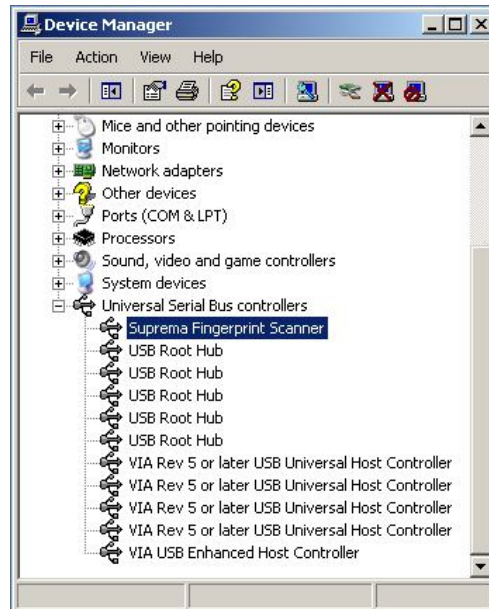
4.2. Confirmation of Driver installation

1. Windows Vista(32,64Bit) / 7(32/64Bit)



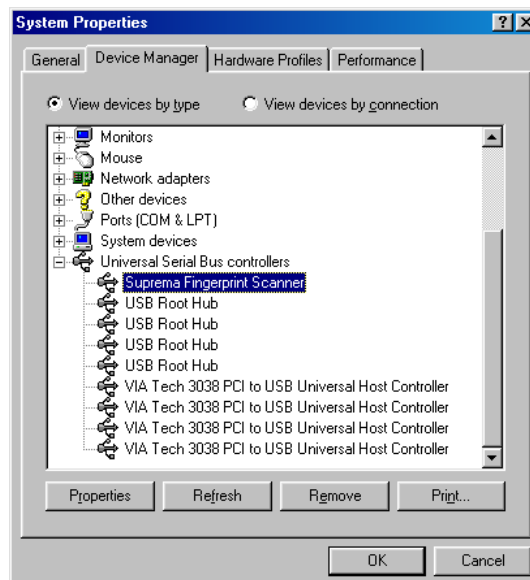
- Device manager: Start -> Control panel -> System and Maintenance -> Windows start -> View Computer Details -> Device manager
- Check the "Suprema Fingerprint Scanner" item on the Universal Serial Bus Controller

2. Windows 2000 / XP(32,64Bit)



- Device manager: Start -> Settings -> Control panel -> System -> Hardware
- Check the "Suprema Fingerprint Scanner" item on the Universal Serial Bus Controller

3. Windows 98 / 98SE / ME



- Device manager: Star -> Settings -> Control panel -> System
- Check the "Suprema Fingerprint Scanner" item on the Universal Serial Bus Controller

5. Specification and System requirements.

5.1. Specification

Section	Specification
Sensor technology	Optical
Sensing area	15.9mm x 17.9mm
Image size(pixels)	288 x 288
Image resolution	500 dpi
Interface	USB 2.0 high speed and full speed
Dimension	67mm(W) X 90mm(L) X 58mm(H)
Weight	Approximately 200g
USB Cable Length	Approximately 1450mm
Operating temperature	-10 °C ~ 50 °C
Max Current	5VDC / 150mA

5.2. System Requirements

OS	Microsoft WINDOWS98SE/ME/2000/ XP(32,64 BIT)/VISTA(32,64BIT)/7(32/64Bit)
CPU	Pentium 133 MHz
Memory	16Mbyte
Interface	USB Port
HDD	20 MB

6. FCC Notices

Note: This equipment has been tested and found to comply with the limits for a Class A digital device, pursuant to part 15 of the FCC Rules. These limits are designed to provide reasonable protection against harmful interference when the equipment is operated in a commercial environment. This equipment generates, uses, and can radiate radio frequency energy and, if not installed and used in accordance with the instruction manual, may cause harmful interference to radio communications. Operation of this equipment in a residential area is likely to cause harmful interference in which case the user will be required to correct the interference at his own expense. Modifications not expressly approved by the manufacturer could void the user's authority to operated the equipment under FCC rules.



Contact Info

- **Suprema, Inc.**

16F Parkview Office Tower, Jeongja, Bundang, Gyeonggi, 463-863 Korea

Tel: +82-31-783-4510

Fax: +82-31-783-4503

Purchase & Inquiry : sales@suprema.co.kr

Online Customer service : support@suprema.co.kr

Web-site : www.suprema.co.kr