

32072 NF-IP716ADHS PRO

7 Zoll Multi Format Testmonitor 4k (8MP)
IP/HD-SDI/EX-SDI/AHD/TVI/CVI, Digital HD, HDMI, CVBS

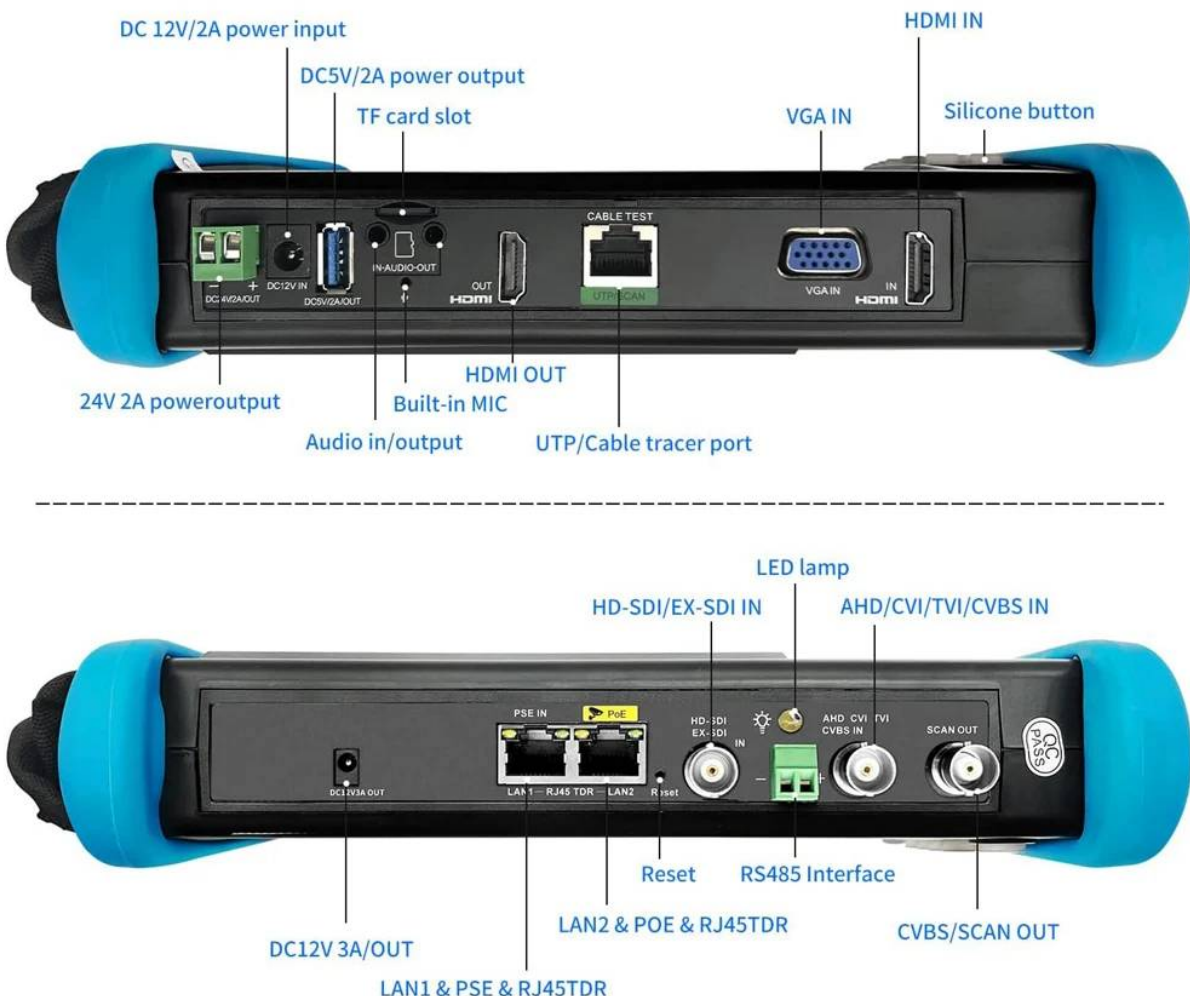


Schlüsselspezifikationen

- IP -Kamera Test (4K/H.265/H264)
- IP & CVBS Test
- NTSC/PAL Auto Anpassung
- PTZ Kontrolle, RS485, Baudr. 600-115200bit/s
- UTP Kabeltest
- Netzwerktest
- Datenmonitor
- POE Test
- Externe Bildschirmausgabe
- CVBS Loop-Test
- Koax-HD Test
- HDMI Eingang
- Anzeige 7 Zoll Touchscreen
- Zoomfunktion
- CVBS Ausgang
- WLAN
- Audio Test
- 24VAC, 12VDC, USB 5V, POE
- Ladezeit 3,5h
- Arbeitszeit 14h
- 7,6V Lithium-Polymerbatterie, 7800mAh

Merkmale

- 7-Zoll-Retina-Touchscreen, 1920*1200 Auflösung.
- 8MP CVI/ TVI/ AHD, 8MP EX-SDI, HD-SDI, 3G-SDI*.
- H.265/H.264, 4K -Videoanzeige über Mainstream.
- Dahua, Hikvision, Achse usw. Onvif -Kamera -Test.
- Integriertes WLAN, erstellen Sie WiFi-Hotspot.
- 4K 30fps HDMI -Eingang & 4K 60fps HDMI Ausgabe, VGA Eingang.
- DC24V 2A, DC12V 3A, USB 5V 2A, DC48V POE -Ausgabe, maximaler Strom 30W.
- Rapid Onvif, automatisches Video anzeigen und einen Testbericht erstellen.
- UTP -Kabel -Tester/RJ45 -Kabel -TDR -Test, Kabelqualitätstest.
- Schnellladezeit 3,5h, Arbeitszeit wenn voll ca. 14h
- Anzeigewiedergabe: Tester, Mobiltelefon und PC -Anzeige gleichzeitig.
- Netzwerktest: Trace route, Link monitor, DHCP server, Port flashing, Ping test.
- Zertifizierung: ROHS-, FCC- und CE -Compliance -Tests, und Noyafa ist nach dem ISO 9001 -Standard zertifiziert.



LCD	Item series	NF-IPCT16ADHS Pro	
	Display	New 7 inch IPS touch screen, 1280*800 resolution	
Video Mode	CVBS	1 channel BNC input & 1 channel BNC looped output, NTSC/PAL (Auto adapt)	
		Analog video level meter, peak video signal level, SYNC signal level, Color bar chroma level measurement	
		PTZ control, RS485 control, Baud 600-115200bps, compatible with more than 30 protocols such as PELCO-D/P, Samsung, Panasonic etc	
		CVBS loop test	Send and receive color bar signal to check BNC cable
	IP camera test 8K/H.265	IP Discovery/Quick ONVIF/IPC test /RTSP play /Client APK	
		Rapid Video	Auto view the video, create testing report
		Hik test tool	Activate Hikvision camera, modify the user name, password and IP parameters
		Dahua test tool	Dahua camera test, modify the user name, password and IP parameters
	IP & CVBS test	IP & CVBS test at the same time, converter test from analog to digital with dual test window	
	Coaxial HD test	8MP TVI camera test, 3840 x 2160P 15 FPS, UTC control & call OSD menu	
		8MP CVI camera test, 3840 x 2160P 12.5/15 FPS, UTC control & call OSD menu	
		8MP AHD test, 3840 x 2160P 12.5/15 FPS, UTC control & call OSD menu	
8MP EX-SDI, HD-SDI, 3G-SDI, UTC control & call OSD menu			
HDMI in & out	Support HDMI input 4K 30FPS, HDMI output 4K 60FPS		
VGA input	Support 1920*1080P		
Zoom Image	4x zoom, to enlarge image, Screen snapshot, record, save, view and record and play back		
Analog Video out	Color bar generator	Output one channel PAL/NTSC color bar signal for testing monitor or video cable	
Power output	External power output	48V PoE power output, max power 30W	
	DC 12Vpower	DC12V 3A power output	
Cable test	TDR cable test	BNC cable, network cable, telephone cable, RVW cable and elevator cable, cat 5/6 cable' s length and short circuit. measurement range 1.2KM	
	Digital cable tracer	Search BNC cable, network cable and telephone cable from the mess cables, more accurately	
	UTP cable test	Test UTP cable connection status and display on the screen. Read the number on the screen	
	RJ45 cable TDR test	Test cable pair status, length, attenuation, reflectivity, impedance, skew etc. measurement range 180M	
TesterPlay	Screen projection: Tester, mobile phone and PC display at the same time (For android mobile phone)		
Network test	Trace route, Link monitor, DHCP server, port flashing, Ping test		
Wi-Fi	Built in WIFI, speeds 150M, display wireless camera image		
Audio test	1 channel audio signal input, test whether sound normal, 1 channel audio signal, to connect headphone		
Data monitor	Captures and analyzes the command data from controlling device, also can send hexadecimal		
PoE test	Measurement PoE switch or PSE power supply voltage and cable connection status		
Drop-down menu	You can select PoE power switch, IP setting, CVBS, LAN info, HDMI IN functions etc in any interface		
External power supply	DC 12V 2A		
Battery	Built-in 7.6V Lithium polymer battery, 7800mAh		
Rechargeable	After fast charging 3.5 hours, normal working time 16 hours		
Operation setting	OSD menu, select your desired language: English, Portuguese, Korean, Russian, Italian, French, Polish, Spanish, Japanese, Turkish, Deutsch, Serbian, Czech, Vietnamese etc		
Auto off	1-30 (mins)		
Working Temperature	-10°C---+50°C		
Working Humidity	30%-90%		
Dimension/Weight	240mm x 154mm x 46mm / 2KG		

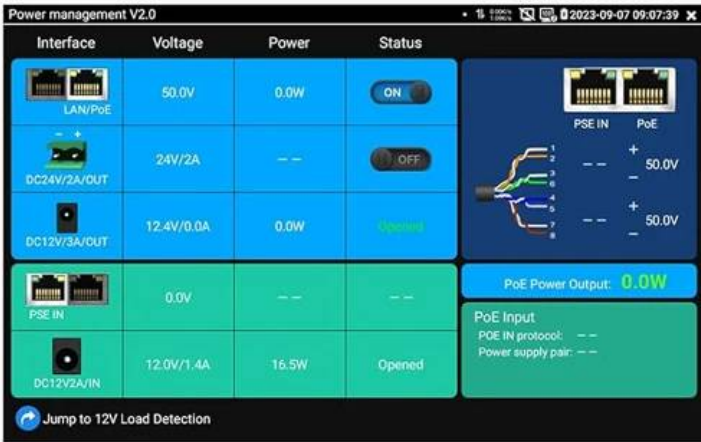
7" SCREEN

7 inch IPS touch screen
1280x800 resolution



Power Management

View real-time data such as voltage and power of POE, DC12, DC24V output/PSE, and DC12V input.



TesterPlay

Tester, Android mobile phone and PC display at the same time. (IOS don't support)





TVI

CVI

AHD

SDI

CVBS

Auto recognize HD coaxial camera type and max 4K 8MP 3840 x 2160P resolution CVBS NTSC/PAL(Auto adapt)

Resolution comparison table:

HD coaxial camera type/ Resolution	720P	1080P	3MP	4MP	5MP	4K(8MP)
CVI 4.0	1280 x 720P 25/30/50/60 FPS	1920 x 1080P 25/30 FPS	—	2560 x 1440P 25/30 FPS	2592 x 1944P 20FPS 2880 x 1620P 25FPS	3840 x 2160P 12.5/15 FPS
TVI 5.0	1280 x 720P 25/30/50/60 FPS	1920 x 1080P 25/30 FPS	2048 x 1536P 18/25/30 FPS	2688x1520P 15FPS 2560 x 1440P 15/25/30 FPS	2592 x 1944P 12.5/20FPS 2960 x 1660P 20FPS	3840 x 2160P 12.5/15 FPS
AHD 4.0	1280 x 720P 25/30/50/60 FPS	1920 x 1080P 25/30 FPS	2048 x 1536P 18/25/30 FPS	2560 x 1440P 15/25/30 FPS	2592 x 1944P 12.5/20FPS	3840 x 2160P 15 FPS

NOTE: only TVI camera support coaxial audio, others type cameras doesn' t support coaxial audio.

SDI type/Resolution	720P	1080P	1080i	4MP	4K(8MP)
HD-SDI	1280 x 720P 25/30/50/60 FPS	1920 x 1080P 25/30/50/60 FPS	1920 x 1080i 50/60 FPS	—	—
EX-SDI-V2.0 (support coaxial control)	1280 x 720P 25/30/50/60 FPS	1920 x 1080P 25/30/50/60 FPS	1920 x 1080i 50/60 FPS	2560 x 1440P 25/30 FPS	3840 x 2160P 20/30 FPS
EX-SDI-V1.0	1280 x 720P 25/30/50/60 FPS	1920 x 1080P 25/30 FPS	1920 x 1080i 50/60 FPS	—	—
3G-SDI	—	1920 x 1080P 50/60 FPS	—	—	—

HDMI input

max 4K 3840x2160 30fps tester will act as a display

VGA input

tester will act as a display max 1920x1080 60fps



HDMI & VGA input

HDMI and VGA input functions allow you to use the tester as a monitor. Support display, record, screenshot, and playback incoming images. **Note: The tester cannot reverse control signal output devices, it is only used as a monitor.**



HDMI output

Turn on the tester first, then connect the HDMI cable and open the HDMI output APP, it will output the color bar screen to the external display.



HDMI output

Connect the HDMI cable first, then turn on the tester, the tester screen will be turned off, and the tester screen image will be output to the external display, you need to use the external USB mouse to operate.

IPC Test

Camera is ready to use

12V OUT: 12.4V Power: 0W

POE: 50V Power: 0W

Port: LAN1 LAN2

Status: 100M

Quality: 100%

Upload: 79.0kb

Download: 3.5m

IP: 9

IP	Device
192.168.1.110	ONVIF_CAMERA
192.168.1.111	ASUSTek
192.168.1.118	
192.168.1.168	

Local IP: 192.168.1.238

8K IP Camera Tester

- 8K 32MP 4K 12MP
- Quick ONVIF
- IP Discovery
- DH HIK Test Tool

IPC Camera Settings

For ONVIF camera, tester can auto login camera and display camera image.

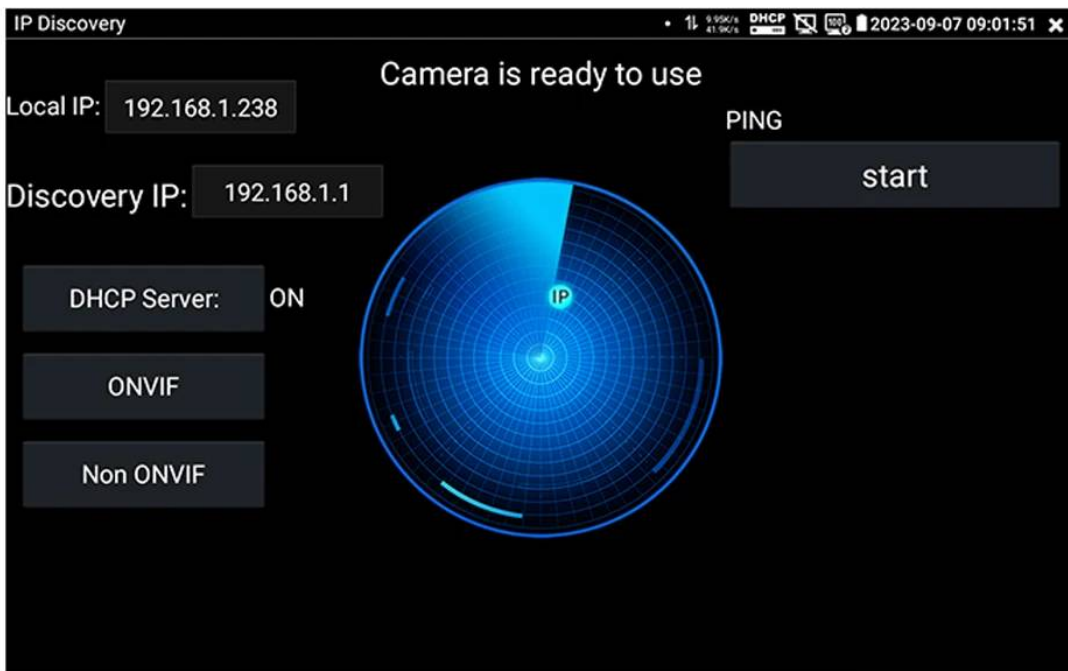
A series of camera settings such as PTZ control, IP camera video settings, image setting, identification, time set, maintenance, camera user set, network setting, etc.

Support create testing report.



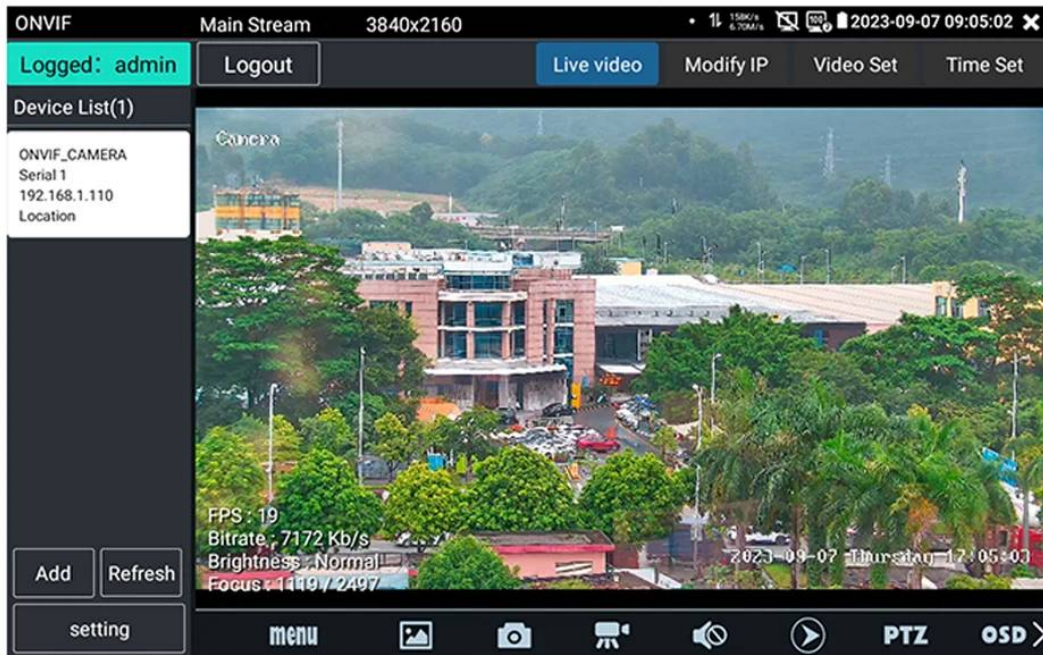
IP Discovery

Auto-scan the whole network segment IP address, tester can auto-modify the tester's IP to the same network segment with the scanned.



ONVIF

For ONVIF camera, auto log in and display image, view video, modify IP, modify channel names create testing report.



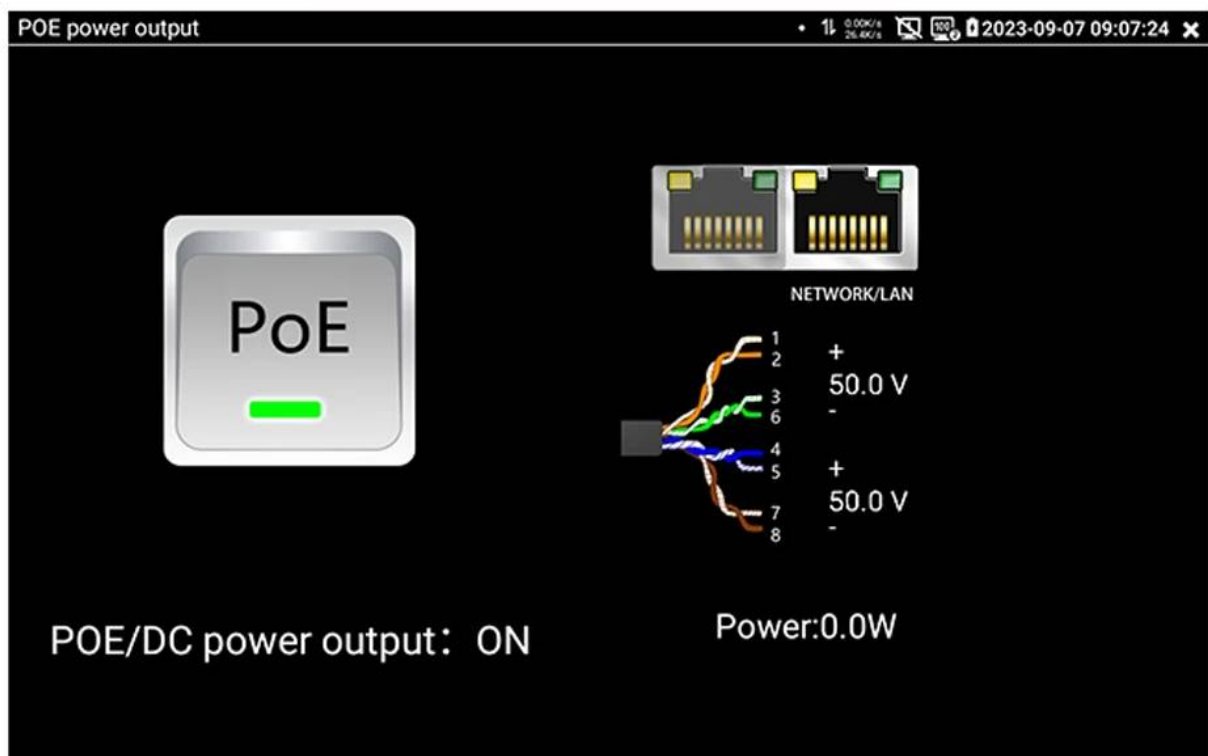
WIFI Analyzer

WIFI Hotspot

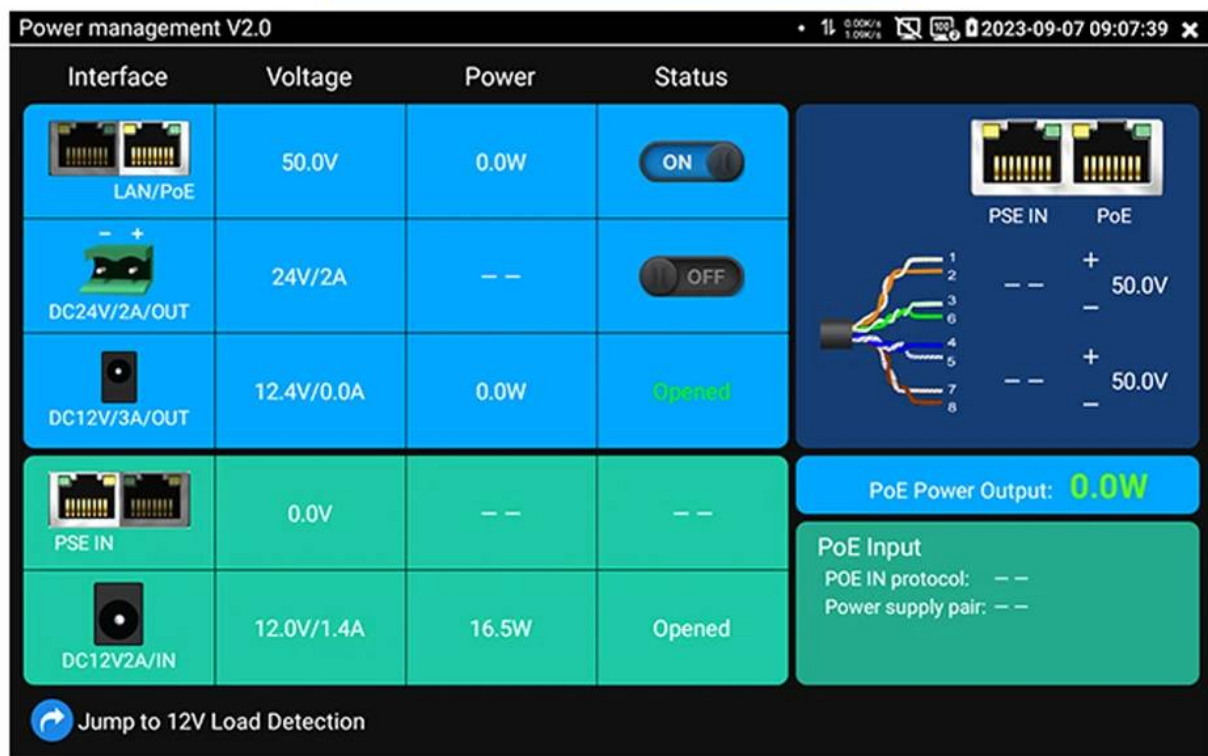


Built-in wireless network WIFI function, 2.4GHz(Not 5G), Display image from the wireless camera, create WIFI hotspot The screen of the tester can be projected onto the Android cell phone in the same hotspot. Professional WIFI analyzer, support view wifi information, test wifi strength, analyze channel occupancy and channel level, etc.

POE Power Output



POE Management



Measurement POE switch or PSE power supply voltage and cable connection status.
Measurement POE switch or PSE power supply voltage and cable connection status.
View real-time data such as voltage and power of POE, DC12,
DC24V output/PSE, and DC12V input.

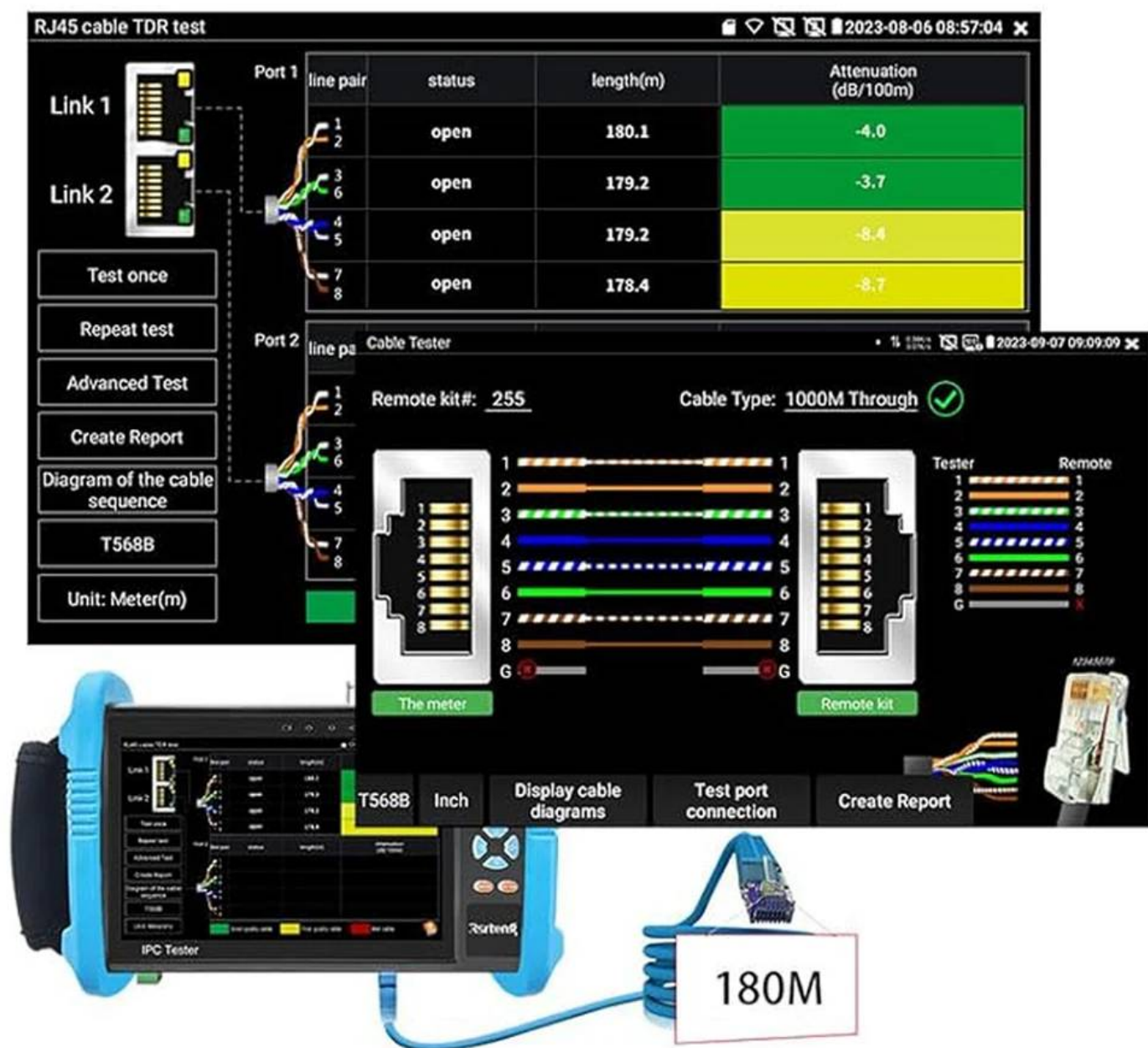
POE 48V/ DC12V/3A 24V/2A 5V/2A POWER OUTPUT

Power output for PoE camera, and detect camera
power at the same time



RJ45 TDR CABLE TEST

Test cable pair status, length, attenuation, reflectivity, impedance, skew etc. measurement range 180m (590ft) Cable tester and quickly test the speed, continuity, arrangement order, fault location of network cables.



NETWORK TOOLS

Professional network testing tools IP scan, Trace route, Link monitor, Link statistics, DHCP server, Port flashing, Ping test, LLDP etc, which can quickly and efficiently conduct network testing.



CPU/RAM/ROM	4-core 2.0GHz/1GB(DDR)/8GB(EMMC)
Operating system	Android 11.0
Display	7 inch IPS touch screen, 1280*800 resolution, Backlit buttons
CVBS	1 channel BNC input & 1 channel BNC looped output, NTSC/PAL (Auto adapt)
	Support CVBS color bar test
	PTZ control, RS485 control, Baud 600-115200bps, compatible with more than 30 protocols such as PELCO-D/P, Samsung, Panasonic etc
	CVBS loop test, The tester send and receive CVBS color bar generator signal, check BNC cable
IP camera test Max 8K 32MP	IP Discovery/ONVIF/IPC test /RTSP play /Client APK
	Rapid Video, Auto view the video, create testing report
	Hik test tool, pressing just one key to activate hikvision camera , Image test, can modify the user name, password and IP parameters
	Dahua test tool, Dahua camera test, modify the user name, password and IP parameters
IP& CVBS test	IP& CVBS test at the same time, converter test from analog to digital with dual test window
Coaxial HD test	8MP TVI camera test, 3840 x 2160P 15FPS, UTC control/call OSD menu, Support coaxial audio
	8MP CVI camera test, 3840 x 2160P 12.5F/15F, UTC control/call OSD menu
	8MP AHD camera test, 3840 x 2160P 15FPS, UTC control/call OSD menu
	8MP EX-SDI, HD-SDI, 3G-SDI camera test, UTC control & call OSD menu
HDMI input	1 channel HDMI input, support 4K 3840x2160P 30fps
HDMI output	1 channel HDMI output, support 4K 3840x2160P 60fps (NOTE: HDMI output havr 2 output modes, please view details)
VGA input	1 channel VGA input, support 1920x1080P 60fps
Zoom Image	4x zoom, to enlarge image, Screen snapshot, record ,save ,view and record and play back
color bar generator	Output one channel PAL/NTSC color bar video signal for testing monitor or video cable
DC5V/2A	USB DC5V/2A power output, as a power bank
DC12V/3A	DC12V/3A power output ,supply temporarily power for the camera
DC24V/2A	DC24V/2A power output ,supply temporarily power for the speed dome camera
PoE	Standard PoE power output, DC48V, max power 25.5W
Cable tracer (Wire Finder)	N/A (This feature requires additional purchase of a cable tracer WT255.)
UTP cable test	Test UTP cable connection status and display on the screen. Read the number on the screen
RJ45 TDR cable test	Test cable pair status, length, attenuation, reflectivity, impedance, skew etc, measurement range 180M.

Digital Multimeter (DMM)	N/A
Optical power meter (OPM)	N/A
Visual fault locator (VFL)	N/A
TDR cable test (hardware support)	N/A
Video level test	N/A
Network interface	RJ45 Dual Gigabit Ethernet ports, 10/100/1000Mbps adaptive
Network test	Trace route, Link monitor, DHCP server, port flashing, Ping test
Wi-Fi	Built in WIFI, 2.4GHz, speeds150Mbps
Audio test	1 channel audio signal input, test whether sound normal, 1 channel audio signal, to connect headphone
Data monitor	Captures and analyzes the command data from controlling device, also can send hexadecimal
Power management	View real-time data such as voltage and power of POE, DC12, DC24V output/PSE, and DC12V input.
Drop-down menu	You can select PoE power switch, IP setting, WLAN switch, HDMI IN functions etc in any interface
TesterPlay	screen projection: tester, mobile phone and PC display at the same time (only for android mobile phone)
Power supply	DC12V/2A
Battery	Built-in 7.6V Lithium polymer battery,7800mAh, 59.28Wh
Rechargeable	After charging 3 to 4hours, normal working time 15 hours
Operation setting	OSD menu, select your desired language: English, Polish, Italian, Korean, Russian, Spanish, Japanese, French, German, Turkish, Portuguese, Vietnamese, etc.
Auto off	1 to 30(mins)
Working Temperature	-10°C to +50°C (14°F to 122°F)
Working Humidity	30% to 90%
Dimension/Weight	Tester: 240x135x35mm(9.4x5.3x1.4inch) / 980g(2.16lbs) Package: 320x290x100mm(12.6x11.4x3.94) / 2110g(4.65lbs)

Packing Listing

